

NOTE:
ELECTRICITY SUPPLY TO COME FROM RELEVANT POWER COMPANY. ELECTRICAL CABLES TO BE LAID IN ACCORDANCE WITH THE POWER COMPANY REQUIREMENTS.

1No. x 63φ & 1No. x 50φ ELECTRICAL CONDUITS INTO VALVE PIT FOR CHECKVALVE CABLES & ELECTRIC VENTILATION FAN (LOCATION TO BE CONFIRMED ON SITE BY SUPERINTENDENT). NOTE: 63φ CONDUIT TO COME UP BENEATH VERTICAL CABLE WAY.

ELECTRICAL SWITCHBOARD CABINET (LOCATION TO BE CONFIRMED ON SITE BY SUPERINTENDENT).

ELECTRICITY FROM SUPPLY PIT. 63φ ELECTRICAL CONDUIT. (LOCATION TO BE CONFIRMED ON SITE BY SUPERINTENDENT).

GATE VALVES (CLASS 14 ACWC) WITH HANDWHEEL.

MIN. 900 x 750 LOCKABLE ALUMINUM GAS TIGHT COVER (2 PART).

SWING CHECK VALVES

1150x900x100 HIGH CONCRETE PLINTH.

VALVE PIT - DN1950 CLASS 4 RRJ-RCP.

2No. x 63φ & 2No. x 50φ ELECTRICAL CONDUITS INTO PUMP WELL FOR PUMP POWER SUPPLY AND CONTROL CABLING. (LOCATION TO BE CONFIRMED ON SITE BY SUPERINTENDENT). NOTES:

- 63φ CONDUITS TO COME UP BENEATH VERTICAL CABLE WAY.
- CONDUITS TO BE INSTALLED AS STRAIGHT AS POSSIBLE I.E. TO MINIMISE CHANGES OF DIRECTION.
- 45° BENDS TO BE USED FOR HORIZONTAL CHANGES OF DIRECTION. 90° LONG SWEEP BENDS IN THE VERTICAL.

PERMANENT HANDRAIL SYSTEM.

SEWAGE PUMP WELL - DN1950 CLASS 4 RRJ-RCP WITH SULPHATE RESISTANT ADDITIVE, CALCAREOUS AGGREGATE & HDPE OR PVC 360° LINING SYSTEM. REFER TO SEWAGE PUMP STATION DESIGN MANUAL FOR DETAILS.

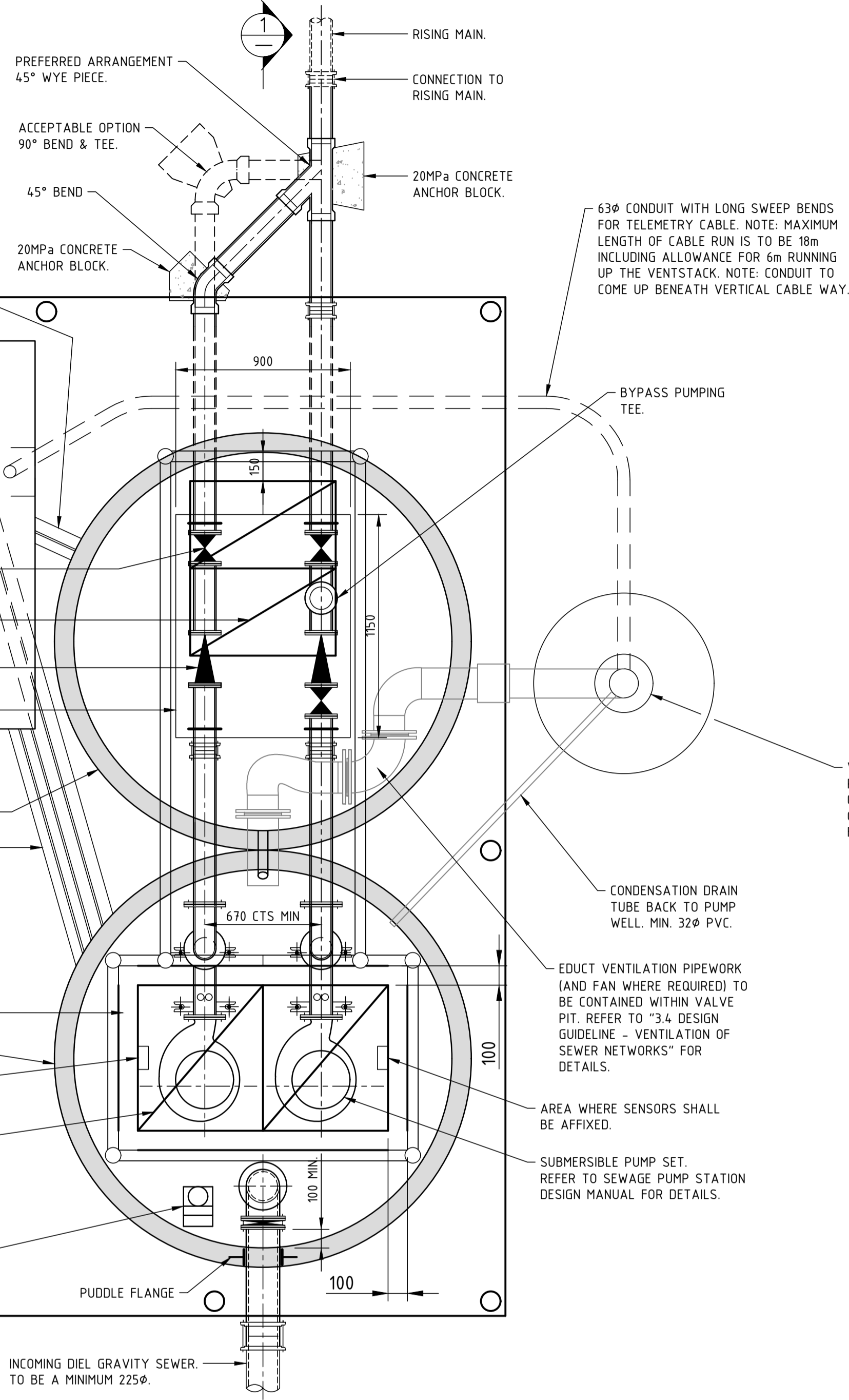
AREA WHERE SENSORS SHALL BE AFFIXED.

MIN. 1290 x 750 LOCKABLE ALUMINUM GAS TIGHT COVER (2 PART).

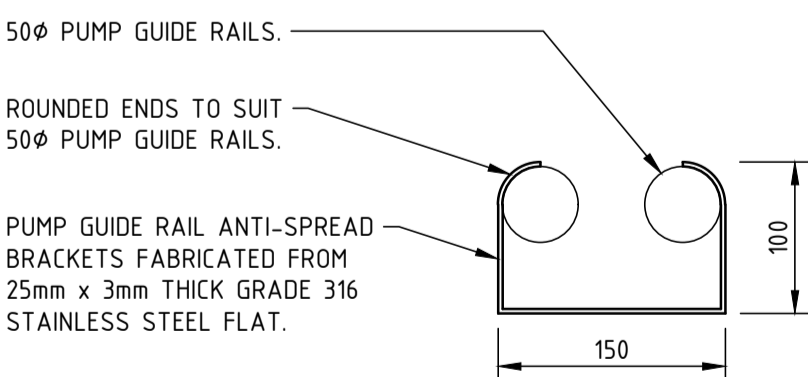
250mm THICK REINFORCED CONCRETE TOP SLAB. REFER TO STD/7 FOR DETAILS.

INDUCT VENT - TO BE SITUATED OPPOSITE EDUCT VENTILATION. REFER TO "3.4 DESIGN GUIDELINE - VENTILATION OF SEWER NETWORKS" FOR DETAILS.

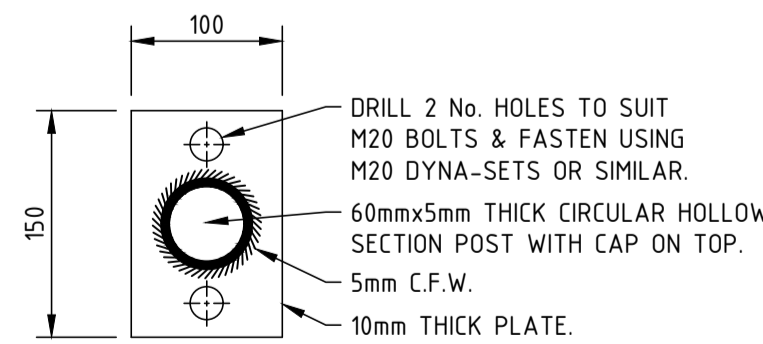
BOLLARDS WHERE REQUIRED TO PREVENT VEHICULAR ACCESS.



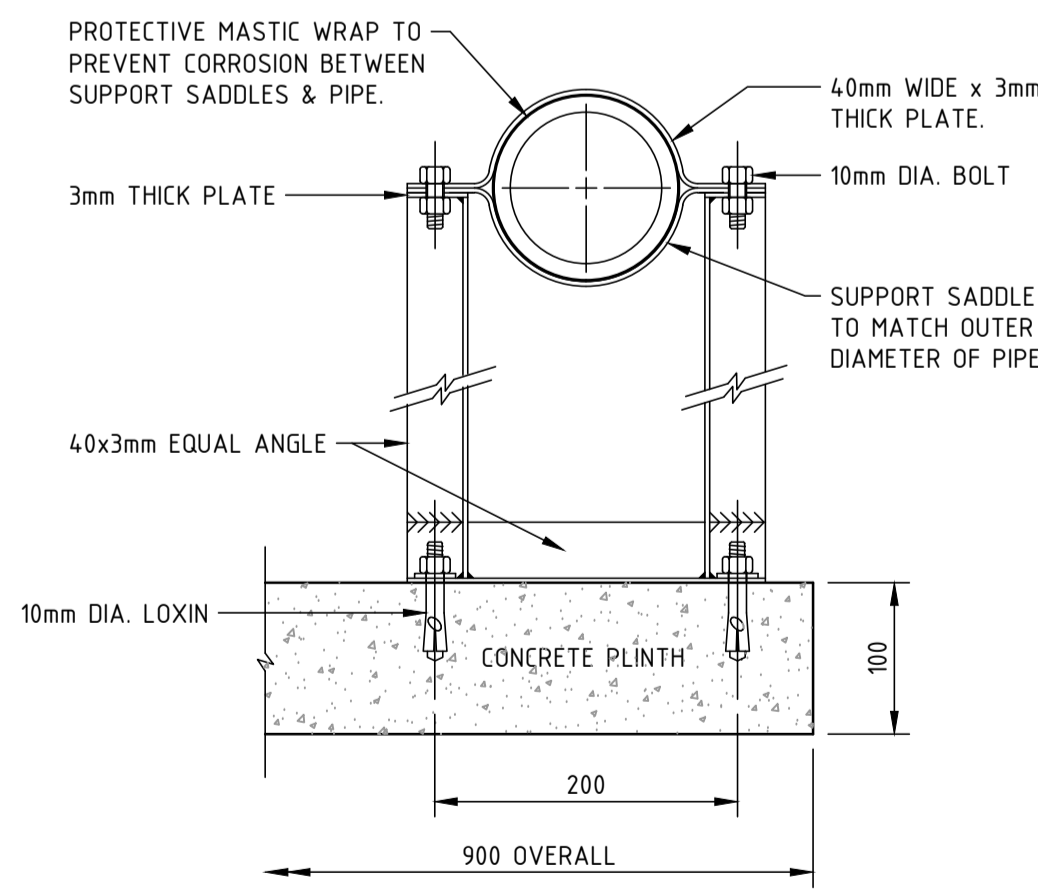
PLAN VIEW
SCALE 1:20



ANTI-SPREAD PUMP GUIDE RAIL BRACKET DETAIL
SCALE 1:5

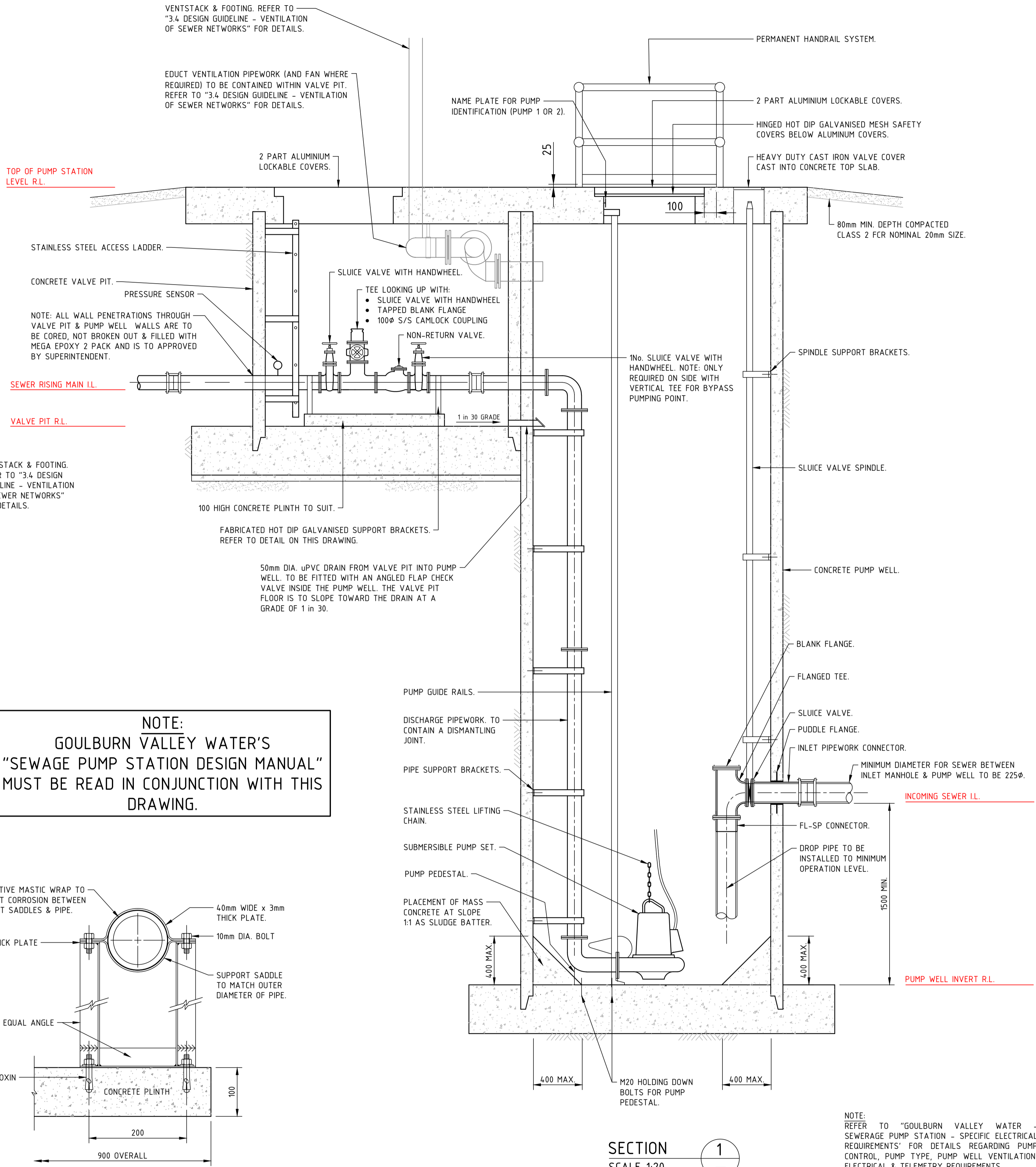


BOLLARD BASE PLATE DETAIL
SCALE 1:5



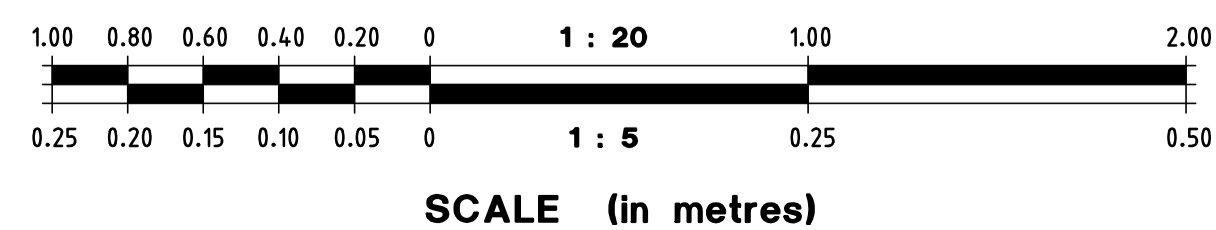
BRACKET DETAIL (VALVE PIT)
SCALE 1:5

NOTE:
GOULBURN VALLEY WATER'S "SEWAGE PUMP STATION DESIGN MANUAL" MUST BE READ IN CONJUNCTION WITH THIS DRAWING.



SECTION 1
SCALE 1:20

NOTE:
REFER TO "GOULBURN VALLEY WATER - SEWERAGE PUMP STATION - SPECIFIC ELECTRICAL REQUIREMENTS" FOR DETAILS REGARDING PUMP CONTROL, PUMP TYPE, PUMP WELL VENTILATION, ELECTRICAL & TELEMETRY REQUIREMENTS.



- NOTES
- ALL DIMENSIONS ARE IN MILLIMETRES UNLESS OTHERWISE NOTED.
 - A 20MPa CONCRETE THRUST OR SUPPORT BLOCK TO BE CONSTRUCTED BEHIND ALL BENDS, TEES, VALVES & BLANK-ENDS ON ALL SEWER RISING MAINS - AS PER STANDARD DETAIL.
 - THIS DRAWING TO BE READ IN CONJUNCTION WITH DRAWING No. STD/7.
 - ALL LEVELS IN METRES AND TO A.H.D.

| REV. | AMENDMENT DESCRIPTION | BY | APP. | DATE |
|------|-----------------------|----|------|------|
| | | | | |

COPYRIGHT
INFORMATION CONTAINED ON THIS DRAWING IS THE PROPERTY OF GOULBURN VALLEY WATER. NO PART OF THIS DRAWING IS TO BE REPRODUCED OR TRANSMITTED IN ANY FORM OR BY ANY MEANS, ELECTRONIC OR MECHANICAL, WITHOUT PERMISSION IN WRITING FROM GOULBURN VALLEY WATER.



104-110 FRYERS STREET, SHEPPARTON, 3630
(P.O. BOX 185, SHEPPARTON, 3632)
PH. (03) 5832 0400 FAX. (03) 5831 1467
www.gvwater.vic.gov.au

SCALE
AS SHOWN

| DESIGN | DRAWN | CHECKED | ORIGINAL SIGNED BY | APPROVED | ORIGINAL SIGNED BY |
|----------|-----------|---------|--------------------|----------|--------------------|
| - | C. TREWIN | - | M. WELK | - | M. WELK |
| SURVEYED | DATE | DATE | 10/07/2018 | DATE | 10/07/2018 |

SEWAGE PUMP STATION
GENERAL ARRANGEMENTS

| |
|-----------------------------|
| CAD: PUMP STATION_STD-6 & 7 |
| SHEET 1 OF 2 |
| GLA No. - |

| REVISION |
|-------------------------|
| - |
| DRAWING NUMBER STD/6 |