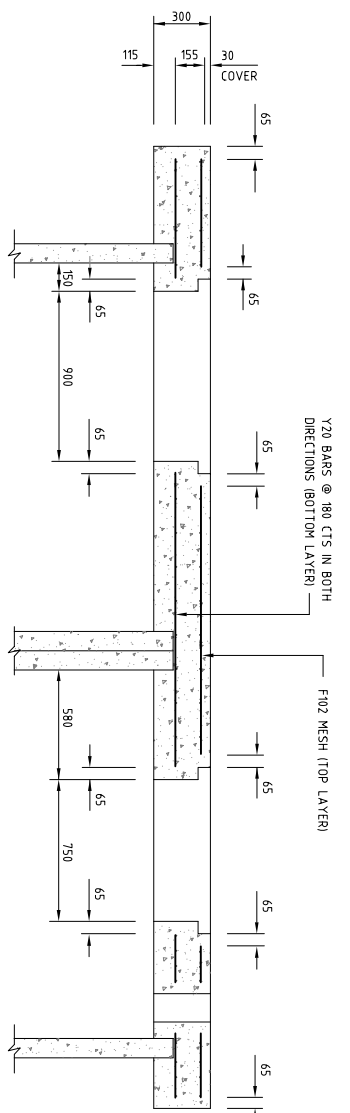


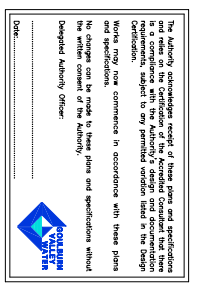
NOTE
LOCATION AND NUMBER OF ELECTRICAL CONDUITS TO BE PROVIDED FROM SWITCHBOARD SITE TO PUMP WELL. DETAILS TO BE ADVISED BY SUPERINTENDENT.

PUMP STATION TOP COVER SLAB DETAIL
SCALE 1:20
(TYPICAL TOP AND BOTTOM REINFORCEMENT LAYERS)



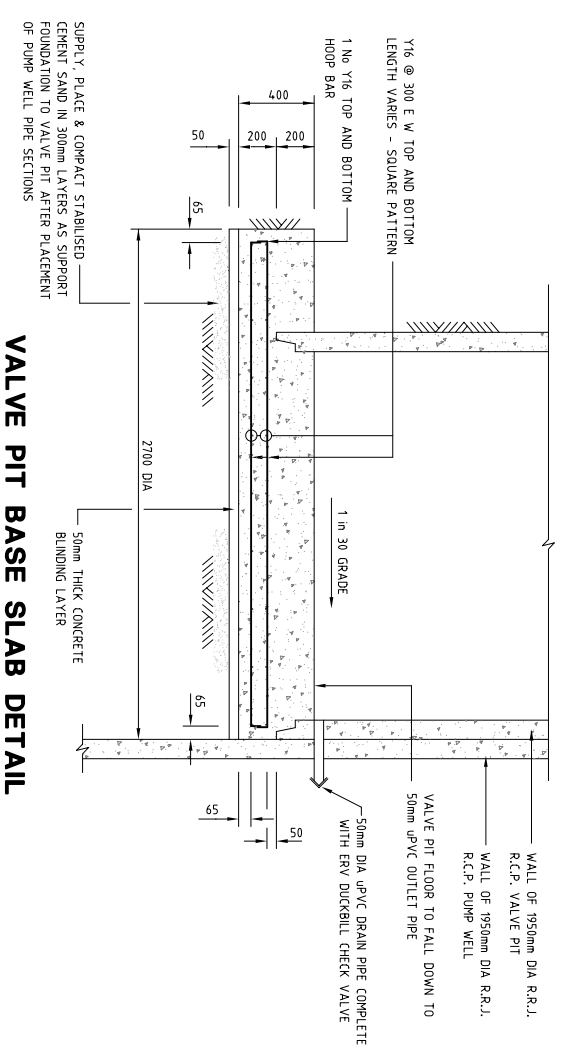
SECTION 2
SCALE 1:20

NOTE 1
METHOD OF FIXING CONNECTION BETWEEN PIPE SECTIONS (BOTH VALVE PIT & PUMP WELL) & TOP SLAB TO BE NOMINATED BY CONTRACTOR & APPROVED BY SUPERVISOR

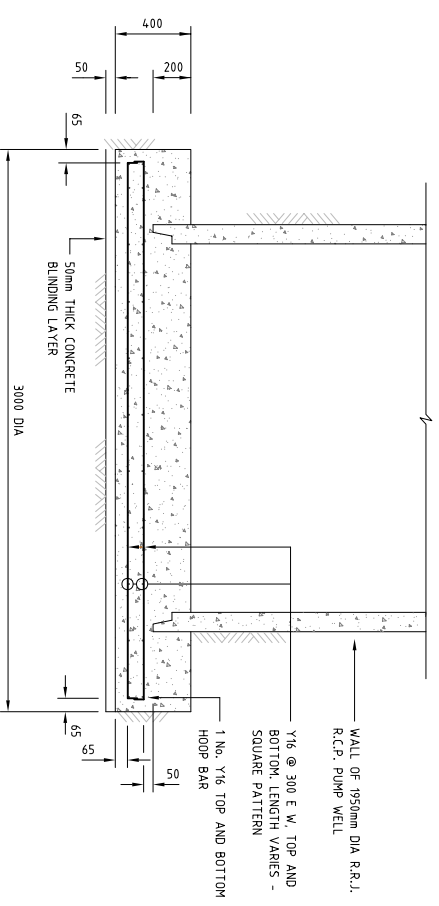


MATERIAL LIST (FOR PUMP STATION)

ITEM	DESCRIPTION	QTY
1	SUPERBRITE PUMP SET - FLYGT MODEL No. P 317, 380/099 MT WITH 430 IMPELLER AND 100mm DIA. DISCHARGE INCLUDING PUMP STOOL, GUIDE RAILS, BRACKETS & FLUSH VALVE	1 No.
2	RESISTANT ADHESIVE, GENERALLY RACED REINFORCEMENT AND PLASTING INSERT INNER LINER	3 No.
3	RESISTANT ADHESIVE, CENTRALLY RACED REINFORCEMENT SECTIONS (CLASS 4 WITH SULPHATE RESISTANT ADHESIVE)	1 No.
4	150mm DIA x 200 LONG CONNECTOR, DEL. (R1-S9)	1 No.
5	150mm DIA x 200 LONG CONNECTOR, DEL. (R1-S9)	1 No.
6	150mm DIA x 200 LONG CONNECTOR, DEL. (R1-S9)	1 No.
7	150mm DIA x 200 LONG CONNECTOR, DEL. (R1-S9)	1 No.
8	150mm DIA x 200 LONG CONNECTOR, DEL. (R1-S9)	1 No.
9	150mm DIA x 200 LONG CONNECTOR, DEL. (R1-S9)	1 No.
10	150mm DIA x 200 LONG CONNECTOR, DEL. (R1-S9)	1 No.
11	150mm DIA x 200 LONG CONNECTOR, DEL. (R1-S9)	1 No.
12	150mm DIA x 200 LONG CONNECTOR, DEL. (R1-S9)	1 No.
13	150mm DIA x 200 LONG CONNECTOR, DEL. (R1-S9)	1 No.
14	150mm DIA x 200 LONG CONNECTOR, DEL. (R1-S9)	1 No.
15	150mm DIA x 200 LONG CONNECTOR, DEL. (R1-S9)	1 No.
16	150mm DIA x 200 LONG CONNECTOR, DEL. (R1-S9)	1 No.
17	150mm DIA x 200 LONG CONNECTOR, DEL. (R1-S9)	1 No.
18	150mm DIA x 200 LONG CONNECTOR, DEL. (R1-S9)	1 No.
19	150mm DIA x 200 LONG CONNECTOR, DEL. (R1-S9)	1 No.
20	150mm DIA x 200 LONG CONNECTOR, DEL. (R1-S9)	1 No.
21	150mm DIA x 200 LONG CONNECTOR, DEL. (R1-S9)	1 No.
22	150mm DIA x 200 LONG CONNECTOR, DEL. (R1-S9)	1 No.
23	150mm DIA x 200 LONG CONNECTOR, DEL. (R1-S9)	1 No.
24	150mm DIA x 200 LONG CONNECTOR, DEL. (R1-S9)	1 No.
25	150mm DIA x 200 LONG CONNECTOR, DEL. (R1-S9)	1 No.
26	150mm DIA x 200 LONG CONNECTOR, DEL. (R1-S9)	1 No.
27	150mm DIA x 200 LONG CONNECTOR, DEL. (R1-S9)	1 No.
28	150mm DIA x 200 LONG CONNECTOR, DEL. (R1-S9)	1 No.
29	150mm DIA x 200 LONG CONNECTOR, DEL. (R1-S9)	1 No.
30	150mm DIA x 200 LONG CONNECTOR, DEL. (R1-S9)	1 No.
31	150mm DIA x 200 LONG CONNECTOR, DEL. (R1-S9)	1 No.
32	150mm DIA x 200 LONG CONNECTOR, DEL. (R1-S9)	1 No.
33	150mm DIA x 200 LONG CONNECTOR, DEL. (R1-S9)	1 No.
34	150mm DIA x 200 LONG CONNECTOR, DEL. (R1-S9)	1 No.
35	150mm DIA x 200 LONG CONNECTOR, DEL. (R1-S9)	1 No.
36	150mm DIA x 200 LONG CONNECTOR, DEL. (R1-S9)	1 No.
37	150mm DIA x 200 LONG CONNECTOR, DEL. (R1-S9)	1 No.
38	150mm DIA x 200 LONG CONNECTOR, DEL. (R1-S9)	1 No.
39	150mm DIA x 200 LONG CONNECTOR, DEL. (R1-S9)	1 No.
40	150mm DIA x 200 LONG CONNECTOR, DEL. (R1-S9)	1 No.
41	150mm DIA x 200 LONG CONNECTOR, DEL. (R1-S9)	1 No.
42	150mm DIA x 200 LONG CONNECTOR, DEL. (R1-S9)	1 No.
43	150mm DIA x 200 LONG CONNECTOR, DEL. (R1-S9)	1 No.
44	150mm DIA x 200 LONG CONNECTOR, DEL. (R1-S9)	1 No.
45	150mm DIA x 200 LONG CONNECTOR, DEL. (R1-S9)	1 No.
46	150mm DIA x 200 LONG CONNECTOR, DEL. (R1-S9)	1 No.
47	150mm DIA x 200 LONG CONNECTOR, DEL. (R1-S9)	1 No.
48	150mm DIA x 200 LONG CONNECTOR, DEL. (R1-S9)	1 No.
49	150mm DIA x 200 LONG CONNECTOR, DEL. (R1-S9)	1 No.



VALVE PIT BASE SLAB DETAIL
SCALE 1:20



PUMP WELL BASE SLAB DETAIL
SCALE 1:20

GENERAL NOTES :

1. ALL STRUCTURAL CONCRETE TO BE 35 MPa (AT 28 DAYS) AND CONTAIN TYPE 'D' (SULPHATE RESISTANT) CEMENT.
2. FOOTINGS TO BE FOUNDED IN UNDISTURBED GROUND HAVING A SAFE BEARING CAPACITY OF 100 KPa.
3. THE MECHANICAL/ELECTRICAL CONTRACTOR SHALL CONDUIT LOCATIONS PRIOR TO THE SURFACE LEVEL.
4. THE CONTRACTOR SHALL CHECK ALL DIMENSIONS OF THE WORKS AND NOTIFY THE SUPERINTENDENT OF ANY ERRORS OR OMISSIONS PRIOR TO THE COMMENCEMENT OF WORKS.
5. DIMENSIONAL NUMBERS INDICATE METRES AND WHOLE NUMBERS INDICATE MILLIMETRES.
6. ALL WORKMANSHIP AND MATERIALS SHALL BE IN ACCORDANCE WITH THE SPECIFICATION.
7. MINIMUM COVER TO THE REINFORCEMENT FOR CONCRETE CAST AGAINST SURFACES SHALL BE 50mm.
8. EXPOSED CONCRETE CORNERS AND EDGES SHALL HAVE 20mm CHAMFERS UNLESS NOTED OTHERWISE. RE-ENTRANT CORNERS SHALL HAVE NO FILETS.
9. ALL REINFORCEMENT SHALL BE SUPPORTED IN ITS CORRECT POSITION DURING PLACEMENT OF CONCRETE WITH APPROVED BAR CHAIRS, SPACERS, SUPPORT BARS, TIRING WIRE, ETC., TO THE SATISFACTION OF THE SUPERINTENDENT.
10. REINFORCEMENT IS REPRESENTED DIAGRAMMATICALLY AND NOT NECESSARILY SHOWN IN TRUE PROJECTION.
11. THIS DRAWING TO BE READ IN CONJUNCTION WITH DRAWING No. STD/6.

DO NOT SCALE DRAWING 1

CAD: STANDARD STD07C	SHEET	1	OF	1
REVISION	C			

- NOTES**
1. ALL DIMENSIONS ARE IN METRES UNLESS OTHERWISE NOTED
 2. A 20mm CONCRETE THROUST OR SUPPORT BLOCK TO BE CONSTRUCTED BEHIND ALL BENDS, TEES, VALVES & BLANK-ENDS ON ALL SEWER RISING MAIN AS PER STANDARD DETAIL
 3. ALL LEVELS IN METRES AND TO A.H.D.

ITEM No.	AMENDMENT DESCRIPTION	BY	APP	DATE
A	MATERIAL LIST ADDED	G.E.		21.08.26

COPYRIGHT
INFORMATION CONTAINED ON THIS DRAWING IS THE COPYRIGHT OF Goulburn Valley Water. NO PART OF THIS DRAWING IS TO BE REPRODUCED OR TRANSMITTED IN ANY FORM OR BY ANY MEANS WITHOUT THE WRITTEN PERMISSION OF Goulburn Valley Water. COPYRIGHT 2023



SEWAGE PUMPING STATION & RISING MAIN		SCALE	AS SHOWN
PUMP STATION STRUCTURAL DETAILS		DESIGN	L.B.
		DRAWN	NOVEMBER 1992
		CHECKED	
		APPROVED	
		DATE	
		REVISION	
		SHEET	1 OF 1
		REFERENCE No.	STD/7