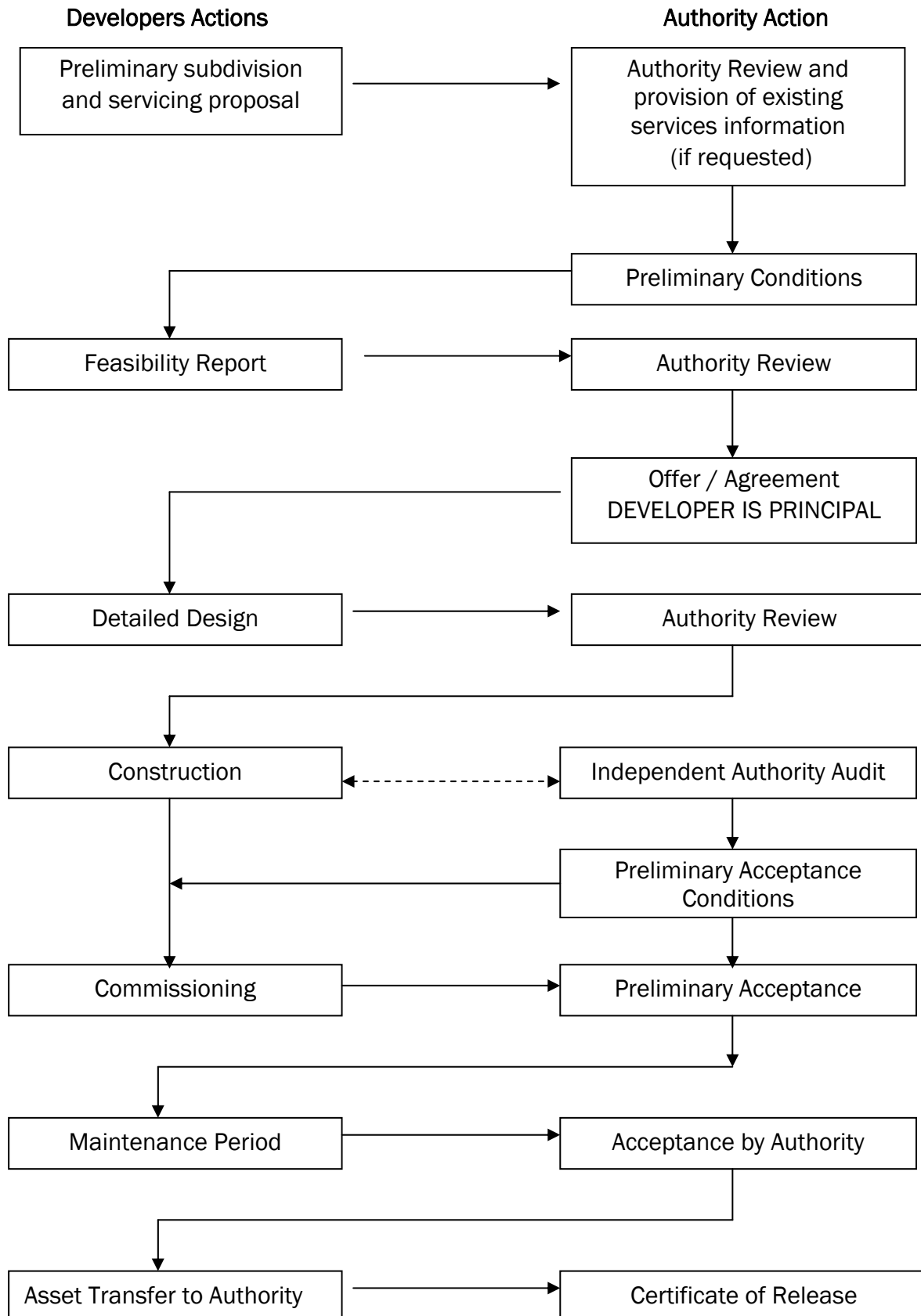


Subdivisional Extension Process

The process for undertaking a Subdivisional Extension is presented below



Documentation proformas are available on the Goulburn Valley Water website in Adobe PDF format. The address for the Website is www.gvwater.vic.gov.au

A print out of the webpage is attached in 'Certification Documentation'.

Copies of current (August 2005) versions of the following documentation are included:

- ◆ Feasibility Report
- ◆ Standard Developer/Consultant Agreement proforma
- ◆ Detailed Design (Water & Sewerage) Certification
- ◆ Preconstruction Certificate
- ◆ Preliminary Acceptance Certification
- ◆ Final Acceptance Certification

The Authority will only accept submissions of these documents as they reflect the Authorities requirements.