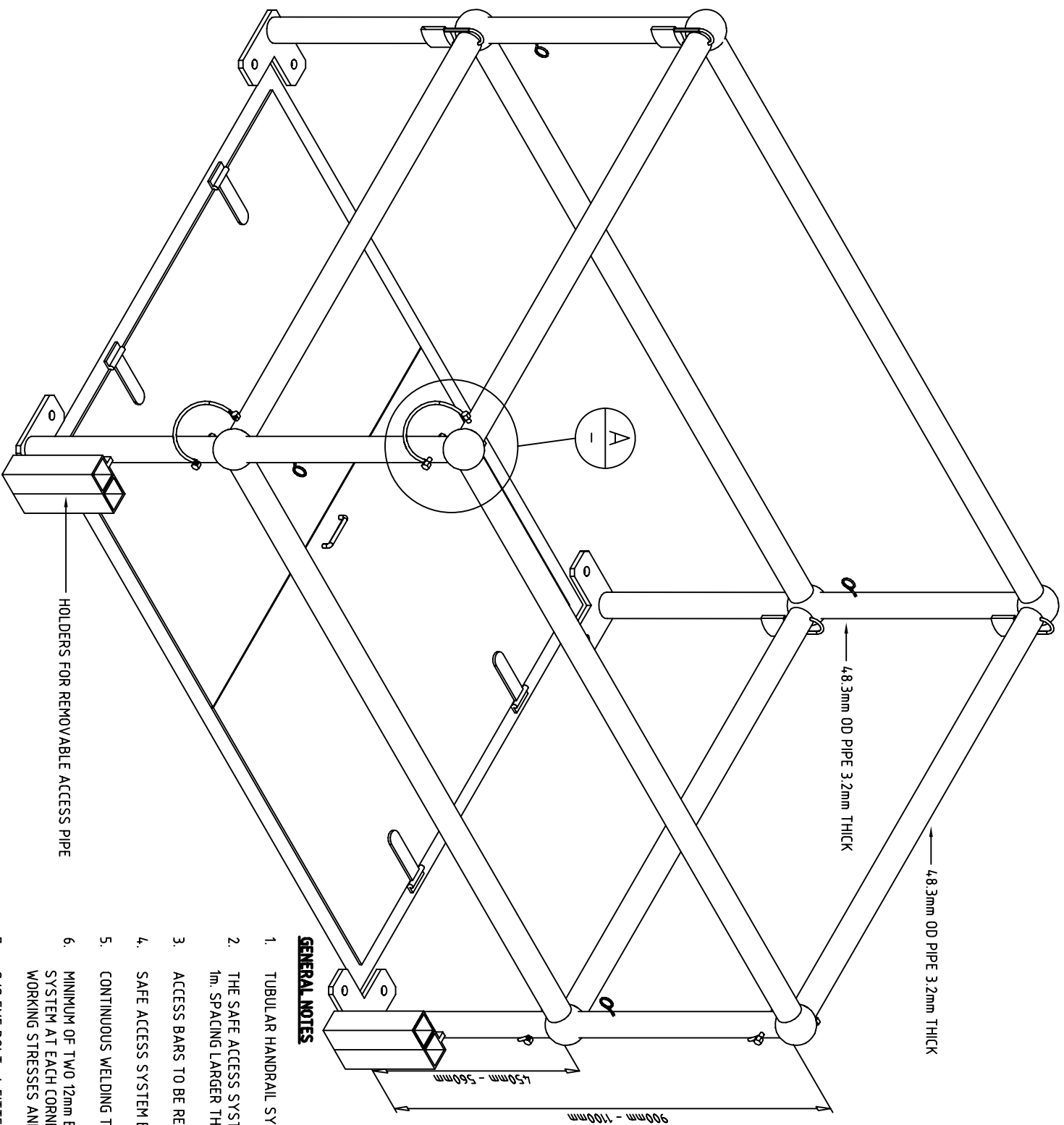


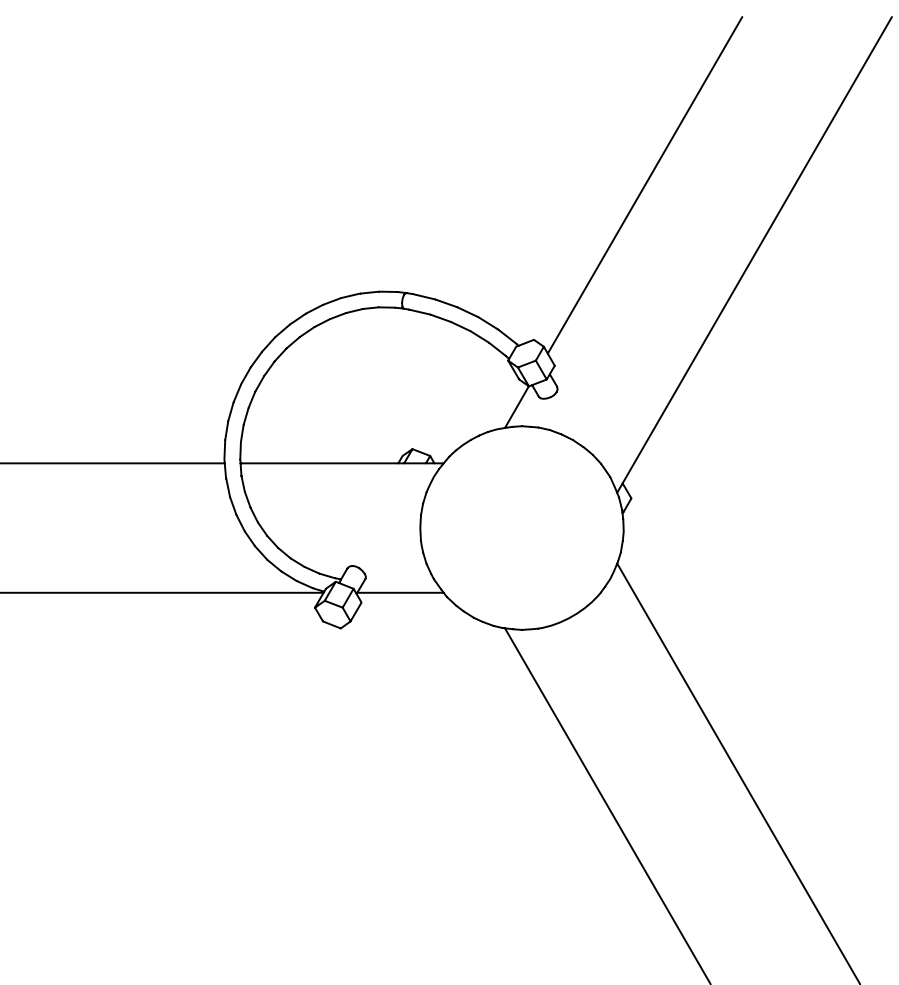
**DO NOT SCALE DRAWING**



**GENERAL NOTES**

1. TUBULAR HANDRAIL SYSTEM MANUFACTURED IN MILD STEEL AND HOT DIP GALVANISED.
2. THE SAFE ACCESS SYSTEM COMPLIES WITH AS1657-1985 FOR MAXIMUM SPACING OF 2m AND HANDRAIL HEIGHT OF 1m. SPACING LARGER THAN SPECIFIED REFER TO ABOVE STANDARD FOR MATERIAL DIMENSIONS AND SPACING.
3. ACCESS BARS TO BE REMOVABLE VIA GOULBURN VALLEY WATER KEYPED 55mm LONG SHANK PAD LOCKS.
4. SAFE ACCESS SYSTEM BUILD DIMENSIONS TO SUIT CLEAR OPENING LID SIZE.
5. CONTINUOUS WELDING TO BE USED FOR ATTACHING GAURDRAIL POSTS, SUPPORTS AND BRACKETS.
6. MINIMUM OF TWO 12mm BOLTS OF GRADE 304, STAINLESS STEEL TO BE USED IN CONNECTION OF SAFE ACCESS SYSTEM AT EACH CORNER OF BASE PLATE TO CONCRETE SURFACE. REFER STANDARD AS 4,100 FOR PERMISSIBLE WORKING STRESSES AND BOLT SIZES.
7. S/S EYE BOLT x4, FITTED TO EACH CORNER POST TO PROVIDE AN ANCHOR POINT FOR SAFETY GRATES AND LID WHEN IN THE OPEN POSITION. NOTE: S/S CABLE AND SNAP LOCK HOOK x4 ARE TO BE FITTED TO THE SAFETY GRATES AND LID ON THE UNDER SIDE OF THE LID. IT IS THE RESPONSIBILITY OF THE INSTALL CONTRACTOR TO DETERMINE THE FIXING LOCATIONS FOR THE LID ANCHOR POINTS.
8. TWO SIDES OF THE SAFE ACCESS SYSTEM ARE TO BE REMOVABLE. THIS IS TO BE APPROVED BY SUPERINTENDENT

DETAIL A  
SCALE N.T.S.



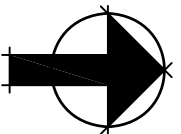
Z: \STANDARD\STD/9 DRAFT	SHEET	1	OF	1
GLA No.	JC1821-16			

REVISION	D
DRAWING NUMBER	STD/9

REV.	AMENDMENT DESCRIPTION	BY	APP.	DATE
D	S/S EYE BOLTS ADDED	JP	SN	30/04/06
C	ADDED FURTHER AMENDMENTS	DB	SN	??/??/06
B	ADDED GENERAL AMENDMENTS TO COMPLY WITH GOULBURN VALLEY WATER STANDARD	DB	SN	16/11/06
A	-	JP	-	05/06



104-110 FRYERS STREET, SHEPPARTON, 3630  
 (P.O. BOX 185, SHEPPARTON, 3632)  
 PH. (03) 5832 0400 FAX: (03) 5831 1467



SCALE  
N.T.S.

## GOULBURN VALLEY WATER SEWAGE PUMP STATION SAFE ACCESS SYSTEM

DESIGN	AQUATECH	DRAWN	J PEACOLA KIS	CHECKED	S NASH
DATE	MAY 2006	DATE	NOV 2006	DATE	

APPROVED	DATE
----------	------