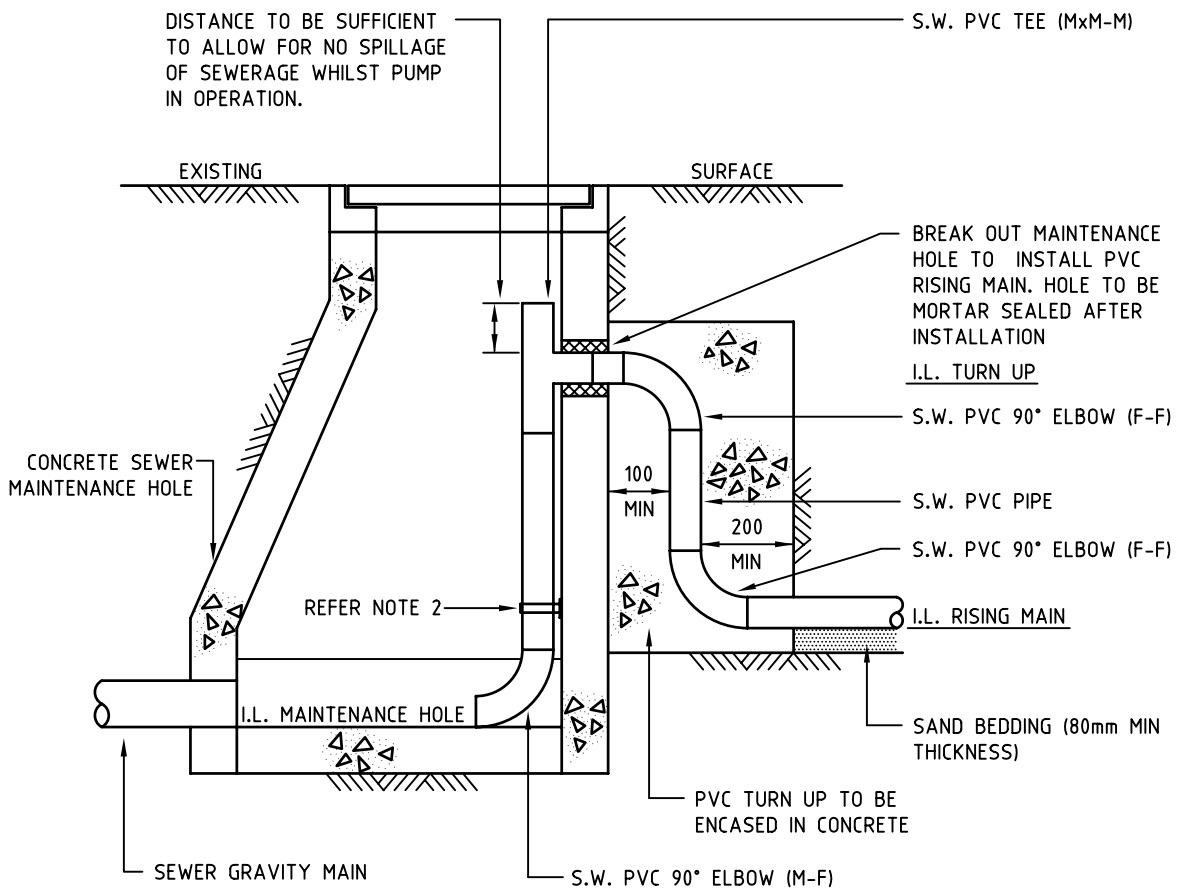


DO NOT SCALE DRAWING



NOTE:

1. PVC PIPE TO BE A MINIMUM OF CLASS 12 AND SN10,000.
2. GRADE 316 SS OR PLASTIC PIPE CLIPS AND ANCHORS AS REQUIRED. IF DROP IS LESS THAN 1500mm, USE ONE CLAMP AT BOTTOM. FOR DROPS LARGER THAN 1500mm, USE ONE CLAMP AT THE BOTTOM AND ADDITIONAL CLAMP(S) TO EQUALLY SUPPORT THE DROP PIPE AT MAXIMUM 1500mm SPACING.

CAD: \STANDARD\SEW-1306-G-(A)



104-110 FRYERS STREET, SHEPPARTON, 3630
 (P.O. BOX 185, SHEPPARTON, 3632)
 PH. (03) 5832 0400 FAX. (03) 5831 1467

STANDARD DRAWING
 SEWER RISING MAIN - PVC
 DETAIL OF TURN UP AT POINT OF
 DISCHARGE

SHEET 1 OF 1

REVISION
 A

DRAWING NUMBER
 SEW-1306-G-(a)

SCALE

N.T.S

DRAWN

D. BRIGGS

APPROVED

S. NASH

DATE

JUNE 2007

DATE

JUNE 2007