



Commercial kitchen

Above ground grease trap

Is trade waste the owner's or the tenant's responsibility?

In minor trade waste category situations, the tenant or occupier is the person generating the trade waste in the course of their business activities. Therefore they are responsible for the wastewater.

In major trade waste agreements, it is the responsibility of both the occupier and owner of the site.

Trade waste charges – how much will it cost me?

Trade waste charges are levied in accordance with the State Government's "user pays" principle and are applied to the volume and quality of the wastewater discharged to a sewerage system.

Are there any penalties if the Authority's trade waste requirements are breached?

Penalties apply to trade waste discharges that do not comply with the Authority's Consent/Agreement requirements.



Greasy waste at a pump station

Trade waste procedure

1. Occupiers of premises that discharge trade waste to sewers are required to complete a trade waste application form.
2. Customers are legally required to obtain a current trade waste consent from Goulburn Valley Water.
3. If the installation of a pre-treatment system is required as a condition of the trade waste consent and below ground plumbing is applicable, an application to connect to the Authority's sewer is required to be completed by a licenced plumber.
4. Following application approval, a Trade Waste Consent Agreement will be issued for the premises detailing specific requirements.

Minor category trade waste

The vast majority of small businesses are included in this category. Trade wastewater is typically of low volume and quality and emanates from take-away food shops, service stations, restaurants etc.

Trade waste charges consist of two components:

1. An annual monitoring and inspection charge (administration charge).
2. A volumetric discharge fee is applied based on a percentage of the premises recorded water usage. The percentage factor applied is determined according to the premises business activity.

Trade waste charges are included in the four monthly water account.



Car wash



Where can I get extra information?

From the Goulburn Valley Water website

www.gwater.vic.gov.au

Goulburn Valley Water Trade Waste Department
Florence Street, Shepparton 3630

Phone (03) 5832 0618

August 2005



Minor Category Trade Waste

Running Water from the Mountains to the Murray



Trade Waste discharge at Broadford wastewater management facility

What is trade waste?

Trade waste is any wastewater that is discharged from a commercial or industrial premise that has or has the capacity to have a higher strength level than normal domestic wastewater.

Trade waste is classed differently to domestic wastewater as trade waste has the potential to impact on the environment, Goulburn Valley Water's pipes, treatment system and Authority staff. Trade waste programs ensure that trade waste customers are charged according to the costs incurred in the collection, treatment and discharge of their waste.

Am I a potential trade waste discharger?

"Yes" if you currently operate or intend opening a business that may be or is similar to the following:

- Restaurants,
- Takeaway/Fast Food,
- Butchers,
- Bakeries,
- Swimming Pools (other than private residential pools),
- Carwashes,
- Laundries, etc.

How is trade waste treated?

Trade waste is treated on site by approved pre-treatment devices, for example a grease interceptor trap or petrol & oil separator. The pre-treatment devices are serviced and the greasy/oily wastes removed by an EPA registered waste collection truck and taken to an EPA prescribed waste treatment facility for proper disposal.

What is a grease interceptor trap (GIT)?

A grease interceptor trap is required for food premises, restaurants, butcher shops, bakeries and fast food chain stores. It is used to capture food, grease and solids before wastewater is discharged to the sewer. Untreated or inappropriately treated trade waste discharged from a GIT can cause blockages of the property drain and compromise the efficiency of the Authority's sewerage system.

Trade waste is classified into categories according to wastewater quality and volume discharged to sewer.

Will my premises be inspected?

Yes. Routine checks will be conducted on trade waste customers by Goulburn Valley Water staff to ensure that:

- consent details are up to date,
- pre-treatment device is working properly,
- pre-treatment device is being correctly cleaned,
- pre-treatment device is correctly sized, and
- to educate the trade waste customer.



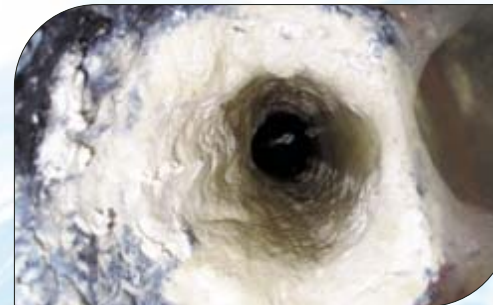
Blockages in property drains



Blockage in Authority's sewer main

How do I reduce grease entering the sewer?

- Ensure the GIT is cleaned by a licensed contractor on a periodic basis as detailed in the premises' trade waste consent.
- Use less water by dry or waterless cleaning methods, for example wiping up spills and sweeping floors.
- Wipe plates and utensils to remove excess grease before washing up.
- Dry cleaning methods include wiping up spills and sweeping floors.
- Do not pour fats or oils down the drain.
- Collect and store used cooking oils and fats for collection by a recycling agent.



Blockages in property drains



Collection from GIT

When is a trade waste consent / agreement required?

Occupiers of premises whose business activities discharge waste to sewer are required to notify Goulburn Valley Water's Trade Waste Services Department for assessment. Determining factors include the volume and quality of the waste and its potential to impact on the sewerage system.

Why are trade waste standards necessary?

Goulburn Valley Water's wastewater management facilities have been designed to treat domestic wastewater to a satisfactory level.

Commercial and industrial wastewater discharges emanate from a diverse range of business activities. A range of pollutants from these business activities can have a negative impact on the sewer infrastructure and the effective operation of the wastewater management facilities. To maintain the infrastructure network and the efficiency of the wastewater treatment it is necessary to have in place trade waste standards.